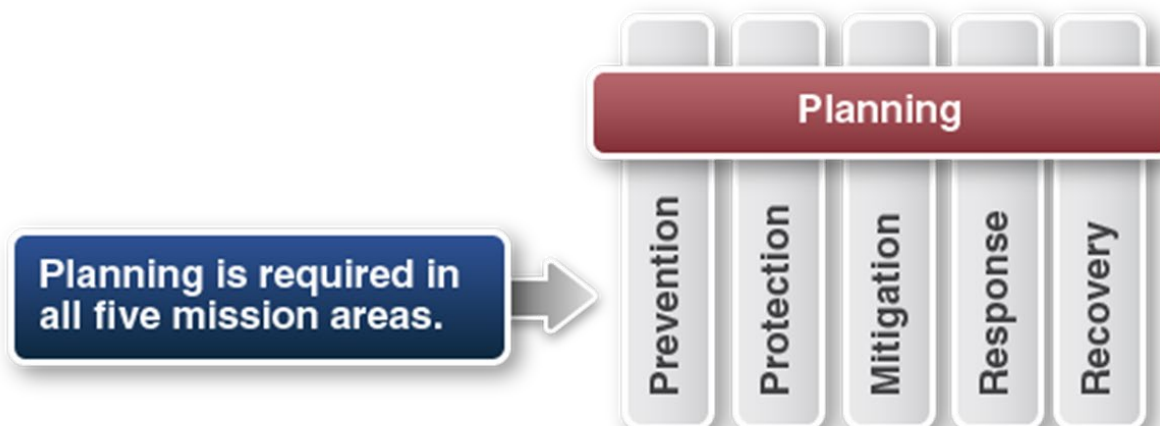


MITIGATION, PREPAREDNESS, RESPONSE, AND  
RECOVERY



# THE EMERGENCY MANAGEMENT CYCLE







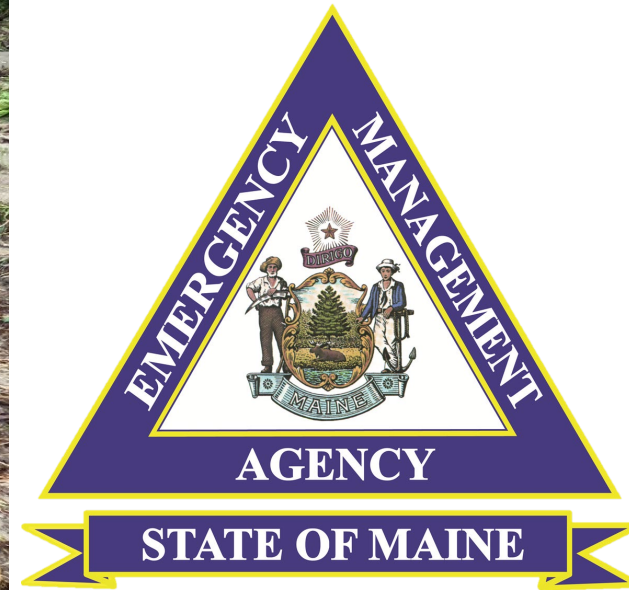
# THE EMERGENCY MANAGEMENT CYCLE



State of Maine
Comprehensive Emergency Management Plan
Volume I: Preparedness Strategy
Risk and Capability Assessments Integrated Preparedness Plan State Homeland Security Strategy
Volume II: State Hazard Mitigation Plan
State Hazard Mitigation Plan
Volume III: Emergency Operations Plan
Base Plan Emergency Support Function Annexes Incident and Supporting Annexes
Volume IV: Interagency Disaster Recovery Plan
Base Plan Recovery Support Function Annexes Supporting Annexes
State Acronym, Abbreviation, and Definition List

*The Maine Emergency Management Agency is established to lessen the effects of disaster on the lives and property of the people of the State through leadership, coordination and support in the four phases of emergency management: mitigation, preparedness, response, and recovery. ([Title 37-B MRSA §701](#)).*





# EMERGENCY MANAGEMENT & SCALING IN A DISASTER EVENT





# EXECUTIVE ORDER 2015-010

## EMERGENCY RESPONSE TEAM:

Maine Emergency Management Agency (chair)  
Dept. of Administrative and Financial Services  
Dept. of Agriculture, Conservation and Forestry  
Dept. of Defense, Veterans and Emergency Mngmt.  
Dept. of Education  
Dept. of Environmental Protection  
Dept. of Health and Human Services  
Dept. of Inland Fisheries and Wildlife  
Dept. of Labor  
Dept. of Marine Resources  
Dept. of Public Safety  
Dept. of Transportation  
Maine Turnpike Authority  
Public Utilities Commission  
American Red Cross  
The Governor's Office

## DISASTER RECOVERY TEAM:

Maine Emergency Management Agency (chair)  
Dept. of Administrative and Financial Services  
Dept. of Agriculture, Conservation and Forestry  
Dept. of Defense, Veterans and Emergency Mngmt.  
Dept. of Economic and Community Development  
Dept. of Education  
Dept. of Environmental Protection  
Dept. of Health and Human Services  
Dept. of Inland Fisheries and Wildlife  
Dept. of Labor  
Dept. of Marine Resources  
Dept. of Professional and Financial Regulation  
Dept. of Transportation  
Governor's Energy Office  
Finance Authority of Maine  
Maine State Housing Authority  
Maine Turnpike Authority  
Maine Commission for Community Service  
Office of the Attorney General  
Maine Historic Preservation Commission  
Maine State Archives  
Maine State Library  
Maine State Museum  
The Governor's Office





# EMERGENCY OPERATIONS PLAN COMPONENTS

---

## Base Plan

### Emergency Support Functions

- ESF 1 – Transportation
- ESF 2 – Communications
- ESF 3 – Public Works & Engineering
- ESF 4 – Firefighting
- ESF 5 – Information & Planning
- ESF 6 – Mass Care
- ESF 7 – Logistics
- ESF 8 – Public Health & Medical Services
- ESF 9 – Search & Rescue
- ESF 10 – Oil & Hazardous Materials
- ESF 11 – Agriculture, Animals, & Natural Resources
- ESF 12 – Energy
- ESF 13 – Public Safety
- ESF 14 – Transition to Recovery
- ESF 15 – External Affairs

### Incident Annexes

- IA 1 – Hurricane
- IA 2 – Tsunami
- IA 3 – Cyber Incident
- IA 4 – Nuclear Power Plant
- IA 5 – Drought
- IA 6 – Mass Fatality

### Supporting Annexes

- SA 1 – Continuity of Operations
- SA 2 – Evacuation
- SA 3 – Radiological Emergency Response





# INTERAGENCY DISASTER RECOVERY PLAN COMPONENTS

---

## Base Plan

### Recovery Support Functions

RSF 1 – Community Planning & Capacity Building

RSF 2 - Economic

RSF 3 – Health & Social Services

RSF 4 - Housing

RSF 5 – Infrastructure Systems

RSF 6 – Natural & Cultural Resources

### Supporting Annexes

SA 1 – Disaster Case Management

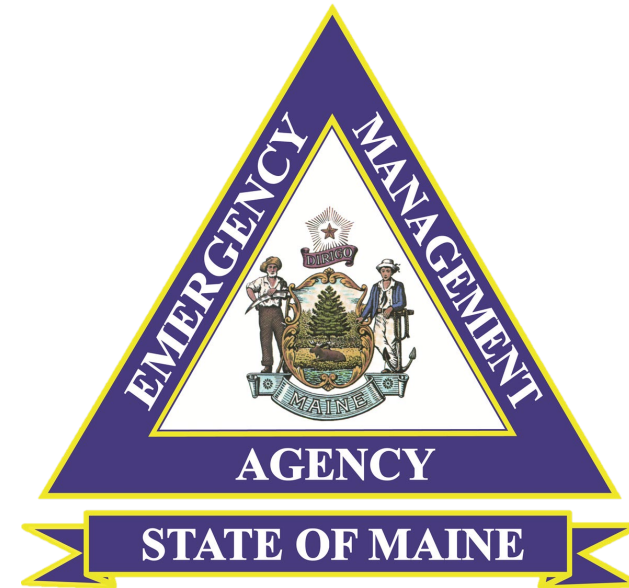
SA 2 – Volunteer & Donations Management

SA 3 – Debris Management

SA 4 – Disaster Assistance







# WINTER STORM RESPONSE





# WINTER STORM RESPONSE

---

## December Storm Activation:

Enhanced Monitoring: December 17<sup>th</sup>

Full Activation: December 18<sup>th</sup>-24<sup>th</sup>

State of Emergency Declared: January 19<sup>th</sup>

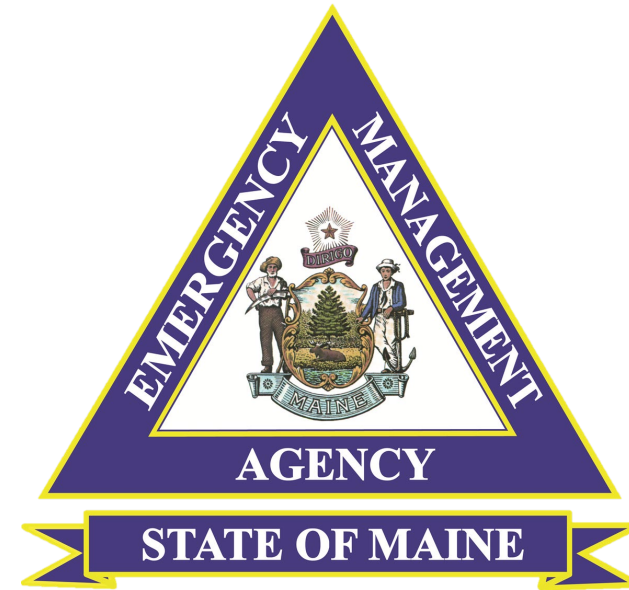


## January Storm Activation:

Enhanced Monitoring: January 10<sup>th</sup>

Full Activation: January 10<sup>th</sup> and 13<sup>th</sup>

State of Emergency Declared: January 11<sup>th</sup>



WINTER STORM RECOVERY



# Disaster Declaration Process

Incident Occurs

Local officials collect initial damage estimates

State requests Joint Preliminary Damage Assessments (PDAs) from FEMA Regional Office

Joint Local/State/Federal PDAs are conducted

Governor submits disaster declaration request to President through FEMA Regional Office

FEMA reviews request, sends recommendation to President for decision

President makes determination



## MAINE STORM DECLARATIONS

DR-4354 (OCTOBER WINDSTORM)

DR-4367 (SEVERE COASTAL STORM)

DR-4522 (COVID-19 PANDEMIC)

DR-4647 (HALLOWEEN STORM)

DR-4696 (WINTER STORM ELLIOTT)

DR-4719 (MAY DAY STORM)

DR-4737 (JUNE 26TH FLASH FLOOD)

DR-4736 (JUNE 29TH FLASH FLOOD)

EM-3598 (HURRICANE LEE)

DR-4754 (DECEMBER 18TH SEVERE STORM & FLOOD)

DR-4764 (JANUARY SEVERE STORMS & FLOOD)

DR-4785 (APRIL SEVERE WINTER STORM)



### **DR-4754 (December Storm)**

2,072 Valid IA Registrations

\$11,717,185 IA Disbursed

12 IA Max Awards

207 PA Applicants

### **DR-4764 (January Storms)**

2,456 Valid IA Registrations

\$9,126,241 IA Disbursed

13 IA Max Awards

105 PA Applicants

**WINTER STORM RECOVERY:  
FEMA PROGRAMS**





### **DR-4754 (December Storm)**

296 Home Loans Accepted  
134 Home Loans Approved  
80 Business Loans Accepted  
22 Business Loans Approved  
37 Economic Injury Accepted  
8 Economic Injury Approved

### **DR-4764 (January Storms)**

279 Home Loans Accepted  
104 Home Loans Approved  
171 Business Loans Accepted  
16 Business Loans Approved  
21 Economic Injury Accepted  
1 Economic Injury Approved

# **WINTER STORM RECOVERY: SMALL BUSINESS ADMINISTRATION**



### **American Red Cross:**

154 Overnight Stays  
612 Meals & Snacks Provided  
400 Clean Up Kits Dispersed  
86 Recovery Support Cases

### **Boothbay V.E.T.S:**

1 Trailer Deployed

### **Southern Baptists Disaster Services & Team Rubicon:**

138+ Requests for Crisis Cleanup

# WINTER STORM RECOVERY: VOLUNTEER AGENCIES





**Maine DEP: 90+ Structures Pumped**

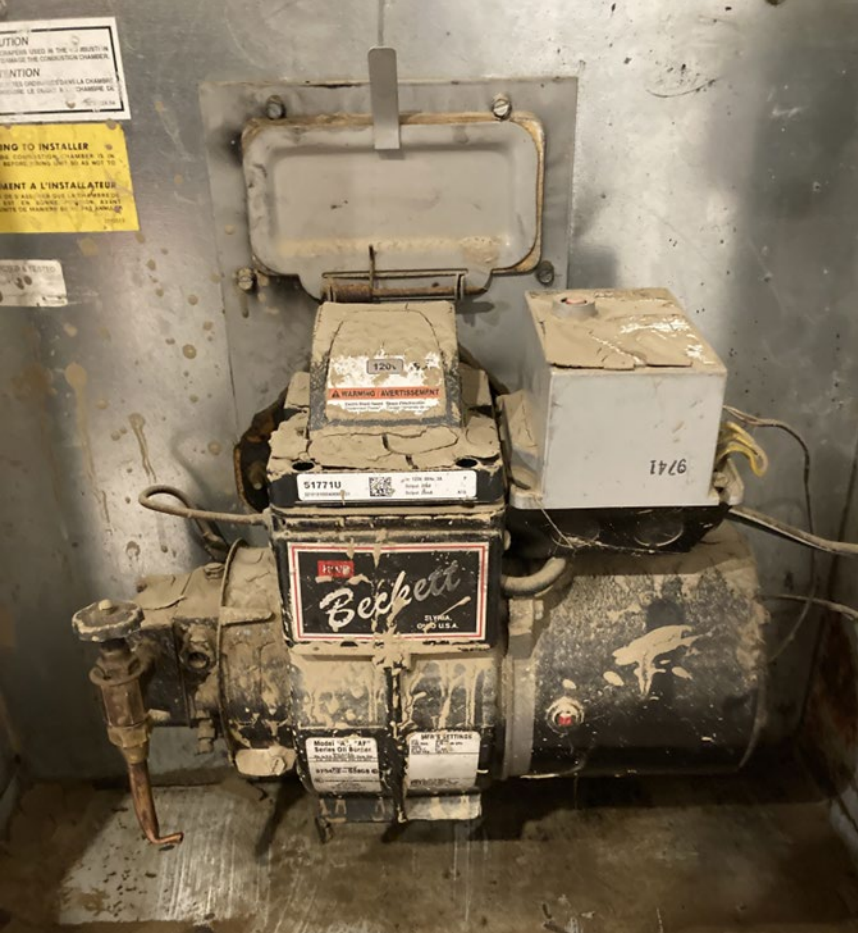
**211 Maine:** Assistance with thousands of damage assessment submissions

**Maine DHHS:** \$1.7 million in Crisis Counseling grants to foster resiliency for disaster survivors

(SNAP) Mass food replacements to impacted households

**Maine Grocers & Food Producers Association (MGFPA) & Retail Association of Maine (RAM):**  
Maine Business Relief Fund

**WINTER STORM RECOVERY:  
OTHER NOTABLE PROGRAMS**



**Maine DOL:** Disaster Unemployment Assistance

**USDA:** Rural Development 504 Disaster Pilot  
Farms Loans  
Emergency Forest Restoration Program  
Emergency Conservation Program

**Maine DOT:** Infrastructure Adaptation Fund

**Maine DECD:** Business Recovery & Resilience Fund

**WINTER STORM RECOVERY:  
OTHER NOTABLE PROGRAMS**





- **Working Waterfront  
(piers, docks, co-ops)**
- **Small Businesses**
- **Primary & Secondary Homes**
- **Limited Contractors**

**REMAINING RECOVERY NEEDS**





## Contact Information

**Anne Fuchs**

Mitigation & Recovery Division Director  
Maine Emergency Management Agency

207-557-3669

[anne.p.fuchs@maine.gov](mailto:anne.p.fuchs@maine.gov)

